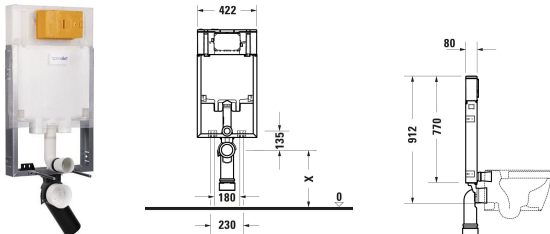


DuraSystem® Installation element wet installation for toilet #
WD1030000000

| < 80 mm > |



Installation element wet installation for toilet	Dimension	Weight	Order number
Type of installation: For walling in and out, Type of mounting: Wet installation, Flush operation: Mechanical, Flush operation position: Front, Adjustable flush volumes, Flush type: Dual Flush, insulated against condensation			
Colors 00 White High Gloss			
Variant			
	80x422 mm	5.707 kg	WD1030000000
Installation accessories			
Mechanical actuator plate for toilet Beta 100 ABS, Dual Flush, Flush operation: Mechanical, Flush operation technology: Manual, Type of installation: surface mounted, Incl. installation frame, Including mounting kit, Incl. push rod	6.5 x 230 mm	0.267 kg	WD5009
Mechanical actuator plate for toilet Beta 120 ABS, Dual Flush, Flush operation: Mechanical, Flush operation technology: Manual, Type of installation: surface mounted, Incl. installation frame, Including mounting kit, Incl. push rod	6.5 x 230 mm	0.279 kg	WD5010

All drawings contain the necessary measurements which are subject to standard tolerances. They are stated in mm and are non-binding. Exact measurements, in particular for customised installation scenarios, can only be taken from the finished piece.